



PLAYGPT

THE WORLD'S FIRST GAME DEPLOYMENT AI SUITE

DEPLOY GAMES FOR BILLIONS OF PLAYERS WITH AI.
IF YOU CAN IMAGINE IT, AI CAN BUILD IT.

ABSTRACT

Artificial Intelligence (AI) holds immense potential to revolutionize various sectors, transforming how we live, work, and interact with the world. AI can optimize all kinds of tasks and operations and even automate routine tasks, which allows workers, creators, owners, etc., to focus on more complex matters.

AI and gaming are a perfect match. AI can be utilized to develop games faster than ever without sacrificing quality, from better NPC characters and interactions to procedural level creation to even understanding personal player preferences.



INTRODUCTION

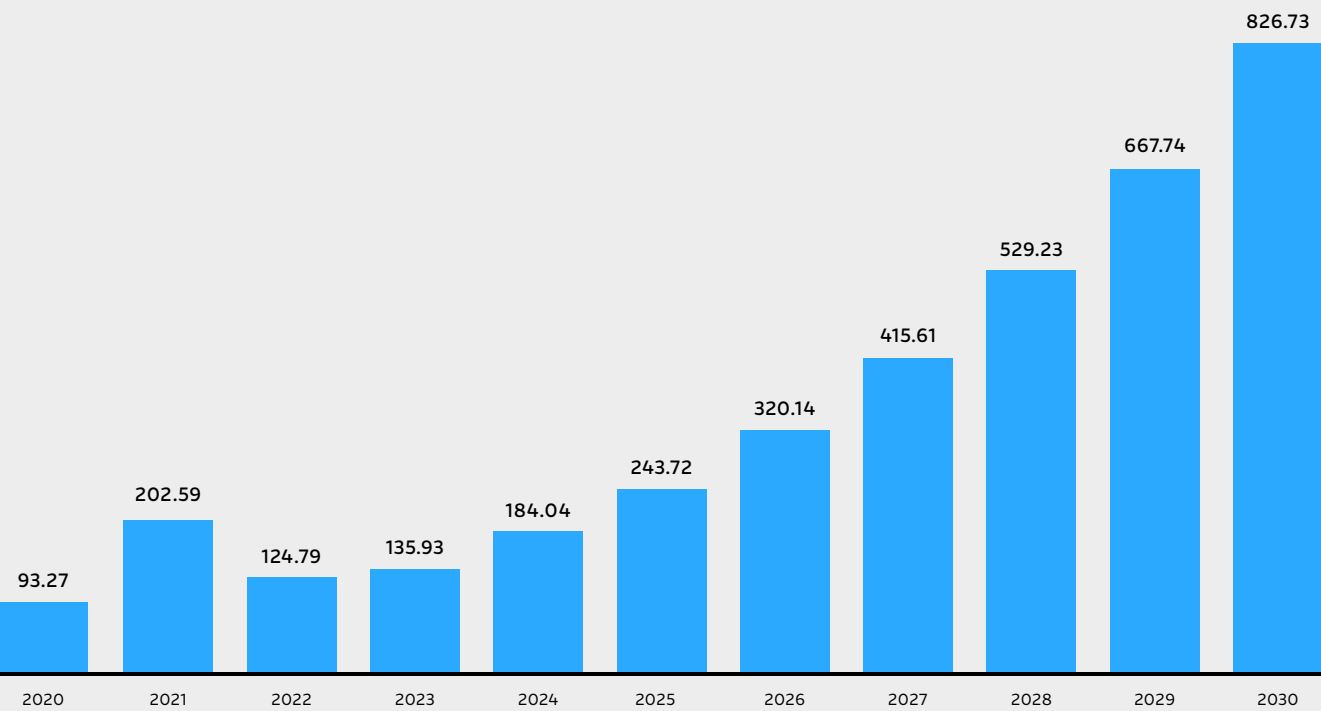
Unsurprisingly, AI has already revolutionized the world by transforming entire industries and enhancing daily life through automation, data analysis, and intelligent decision-making. One of the main benefits of Artificial Intelligence is its ability to boost efficiency but that’s just a small part of it. AI is capable of creativity, which many people thought was going to be a significant barrier.

We have seen its performance with programs like Midjourney or Dall-E, where you can create amazing images from a single text prompt. Now we have sound, music, and even video that can be created from single prompts. The progress is exponential and it won’t stop any time soon.

This paper aims to show the potential uses of AI in gaming, transforming the industry forever. The solution called “NeuroPlay” is based on a platform that captures existing and new AI solutions to create dynamic, immersive, and personalized gaming experiences.

The AI market is expected to reach almost \$1 Trillion by the end of this decade.

PROJECTED VALUE OF AI MARKET



DATA COLLECTION

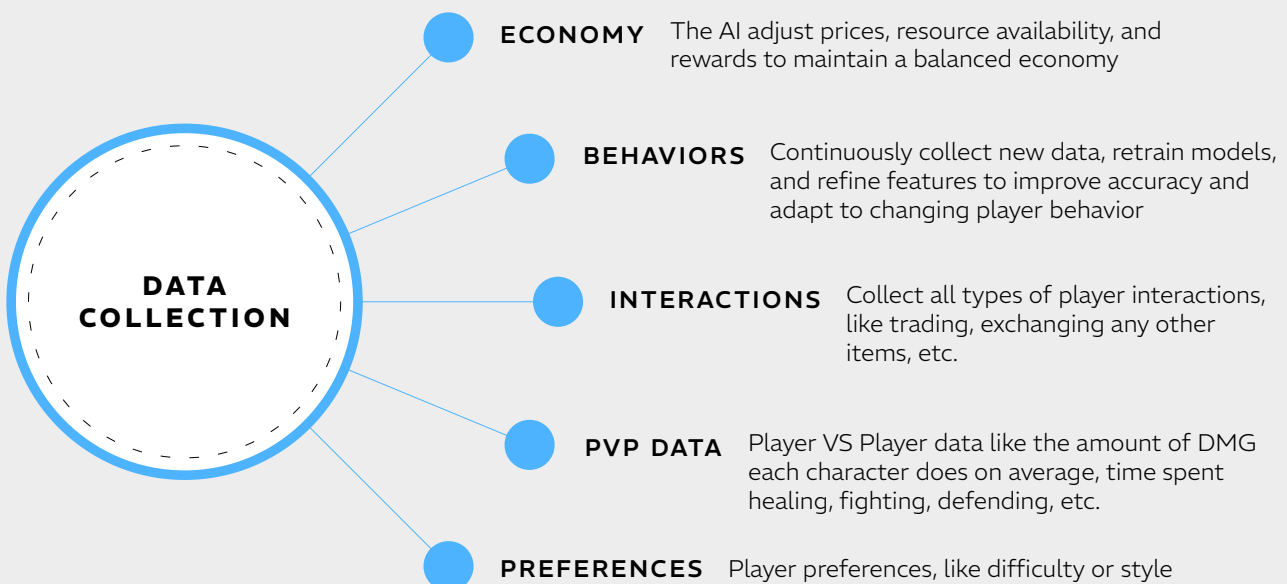
The system must collect as much data as possible from ALL in-game events, including player movements, interactions, achievements, economy transactions, player demographics, playtime, preferences, behavioral patterns, and social interactions. This process is arduous and can take some time, but it's crucial and the core step for PlayGPT.

DATA PREPROCESSING

Cleaning: Remove or correct any errors, inconsistencies, or missing values in the data.

Normalization: Standardize data to ensure consistency, particularly when combining data from different sources.

Feature Engineering: Extract relevant features from raw data to create meaningful inputs for machine learning models.



MODEL SELECTION

Supervised Learning: Use labeled data to train models for predicting player churn, in-game purchases, or skill progression. Standard algorithms include decision trees, random forests, and neural networks.

Unsupervised Learning: Identify patterns and group similar data points without labeled outcomes. Techniques like clustering (K-means) can segment players based on behavior.

Reinforcement Learning: Optimize dynamic systems by learning the best actions through trial and error, applicable for adaptive NPC behavior and game balancing.

TRAINING AND EVALUATION

Training: Use historical game and player data to train the chosen models. This involves feeding data into NeuroPLAY, adjusting parameters, and minimizing errors.

Validation Step: Split data into training and validation sets to assess performance and avoid overfitting.

Evaluation: Use metrics like accuracy, precision, recall, F1 score, and AUC-ROC to evaluate the model's effectiveness. Cross-validation can provide a more robust assessment.

APPLICATIONS

Developers will be able to tailor in-game experiences based on individual player preferences and behaviors, such as adjusting difficulty levels or recommending specific content. Forecast player behavior, such as in-game purchases, or skill development, enabling proactive measures to enhance engagement by making it easier or harder.

PlayGPT utilizes player data to identify imbalances in gameplay and make data-driven adjustments to improve fairness and enjoyment. Balancing a game is crucial when it comes to the online multiplayer genre, AI models can be trained to greatly optimize this boring task.

NeuroPlay can understand player motivations and preferences and remodel game design and marketing strategies.



"THE COSMOS RIFT" COMING SOON AT





AI-GENERATED LEVELS

The concept involves using AI algorithms to generate game levels procedurally, ensuring that each playthrough is unique.

Procedural Algorithms: Create maps and levels that vary with each playthrough, using AI to ensure they are playable and balanced.

Player Adaptation: Levels adjust in difficulty and style based on the player's performance and preferences.

Constant Innovation: Introduce new elements and challenges to maintain player interest.

How it Works: AI-driven procedural generation means that no two levels are the same. The AI considers player skill, previous level designs, and gameplay data to craft unique and engaging environments every time.



AI-ENHANCED STORYTELLING

The concept involves implementing AI that can generate and expand the game's narrative in real-time.

Story Generation: Use AI to create personalized plots and subplots based on player decisions.

Character Evolution: Game characters can develop complex story arcs and interact meaningfully with the player.

Modular Narrative: The story is built in a modular fashion, allowing for a unique experience for each player.

How it Works: NeuroPlay dynamically generates story content that responds to player choices, creating a branching narrative that evolves based on player actions. This ensures a rich and immersive storytelling experience.





PVP AI BALANCING

The concept involves implementing AI to balance player versus player (PvP) matches.

Skill Adjustment: The AI dynamically adjusts player skills and stats to ensure fair competition.

Performance Monitoring: Analyze PvP matches in real-time or replays to detect and correct potential imbalances.

Continuous Feedback: Collect data from Player versus Player matches to improve the balancing system.

How it Works: AI-driven balancing ensures that PvP matches are fair and competitive by adjusting player attributes and matchmaking based on real-time performance data. This promotes a more enjoyable and balanced PvP experience.



AI NPCs

The concept involves developing NPCs with complex and realistic behaviors that react and adapt to player actions.

Reactive AI: NPCs can change their behaviors based on the player's actions and decisions.

Dynamic Narratives: NPCs can generate personalized dialogues and quests, enriching the game's narrative.

Realistic Behaviors: Simulate emotions and relationships between NPCs to create a more immersive environment.

How it Works: NPCs are designed to interact with players meaningfully, reacting to their choices and actions. This creates a living world where NPCs have their own agendas and can influence the game's story and environment.





IN-GAME ECONOMY BALANCE

The concept involves using AI to manage and balance the in-game economy.

Dynamic Adjustment: The AI adjusts prices, resource availability, and rewards to maintain a balanced economy.

Real-Time Analysis: Monitor and analyze in-game transactions to detect and correct imbalances.

Economic Interaction: Simulate complex markets and economies that respond to player actions.

How it Works: The AI continuously monitors the game's economic activity, making adjustments to ensure fair and engaging economic dynamics. This helps prevent inflation, resource scarcity, and unbalanced gameplay rewards.



NEUROPLAY
TECHNOLOGY

/ **INFRASTRUCTURE**

Integrating NeuroPlay benefits developers, players, and content creators. Developers gain from AI-driven testing, faster cycles, and data-driven decisions, optimizing resources and game balance.

Players enjoy personalized experiences, balanced gameplay, immersive environments, and unique content. Content creators generate unique content, engage communities, and monetize through brand integration. NeuroPlay enhances creativity, performance, and engagement.

BENEFITS FOR DEVELOPERS

Developers of any genre of video game can gain a significant edge over their competitors by integrating NeuroPlay into their development phase. While creating any type of game should be a fun experience, there are many boring but crucial steps and tasks that have to be completed.

PlayGPT aims to automate a significant portion of the development process through NeuroPlay by enabling developers to tap into AI tools. NeuroPlay can detect bugs, thoroughly test games, and even identify potential glitches before release.

It can optimize resource allocation, such as memory and processing power, to ensure smooth gameplay performance across different platforms and devices.

NeuroPlay will also be capable of performing an exhaustive analysis of player behavior and collecting the data to improve the different aspects of the game like the design, mechanics, and even economy.

UTILITY

The token encompassing the entire PlayGPT ecosystem and NeuroPlay is called \$GPTAI. It will allow players, developers, and other contributors to interact with and participate in the PlayGPT network.

Developers and game creators need \$GPTAI to utilize NeuroPlay's full capabilities. Everyone has two ways of accessing all the premium features. The first is by simply paying for it monthly, quarterly, or yearly, using stablecoins or \$GPTAI for a discount.

The second method involves an 80% discount but forces the users to stake the remaining price calculated in \$GPTAI for a pre-determined amount of time.

We are also introducing a new concept called PlayDrop which allows users to stake \$GPTAI and earn different gaming tokens, released and unreleased from our partners and projects that utilize the NeuroPlay technology.

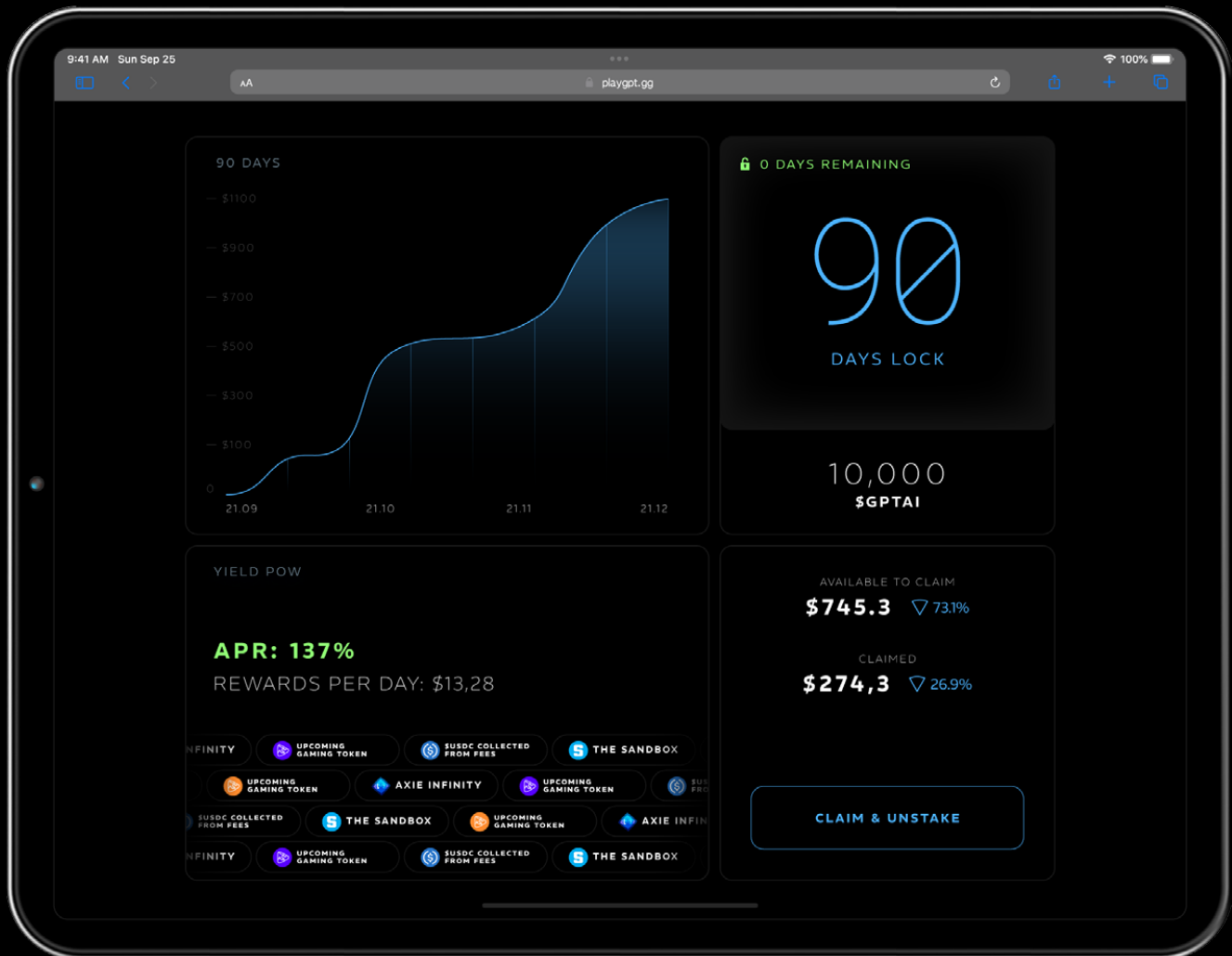
Of course, \$GPTAI will also be an in-game currency on games developed on PlayGPT, allowing players to purchase in-game items as NFTs. Additionally, tournament entry tickets must be paid with \$GPTAI tokens, further increasing the buying pressure of the token.

\$GPTAI TOKEN



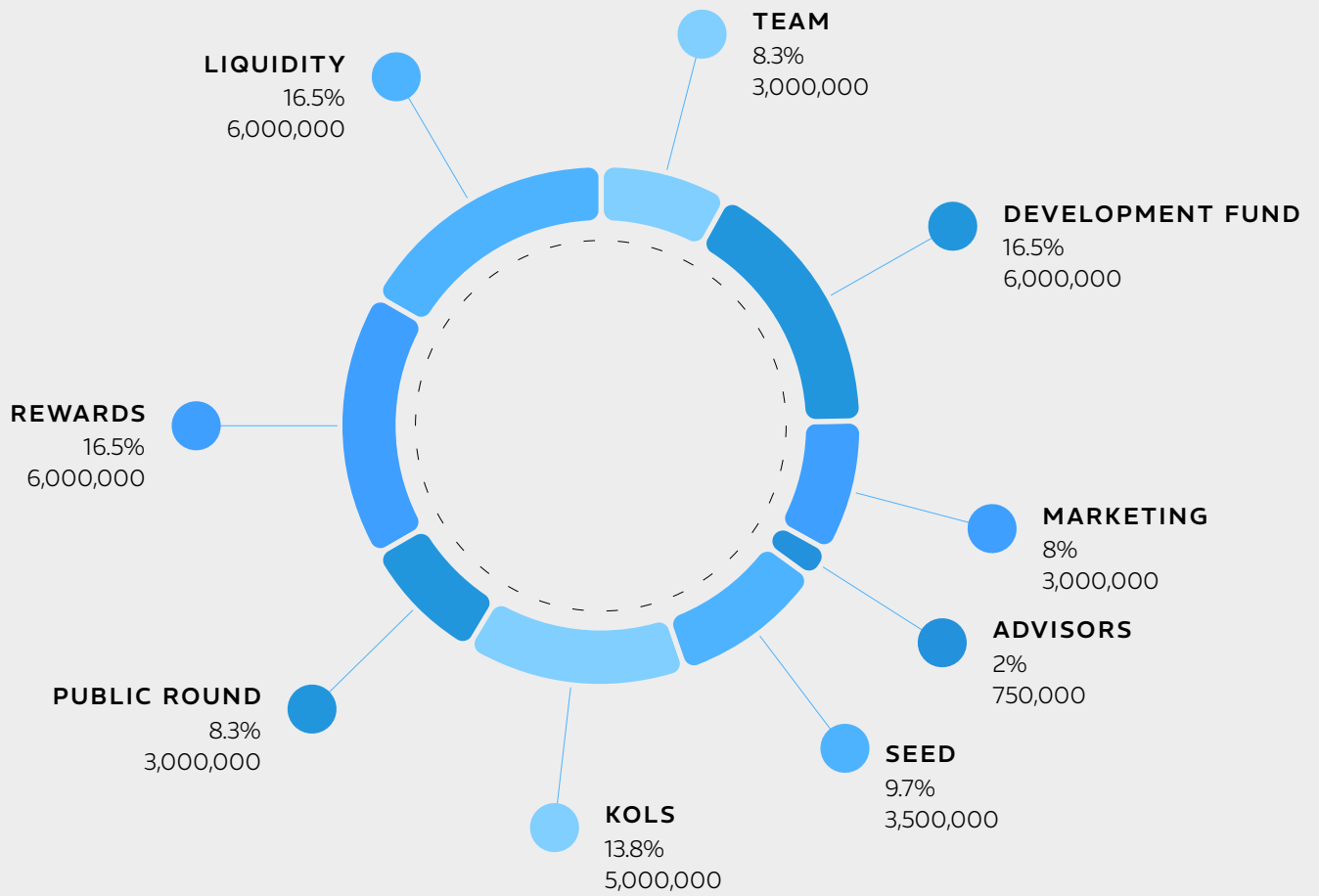
PLAYDROP

STAKE \$GPTAI TO EARN RELEASED
AND UPCOMING GAMING TOKENS.



Stake and lock your \$GPTAI for at least 90 days to start earning tokens from our partners and PlayGPT ecosystem.

TOKENOMICS



TOTAL 36,250,000 \$GPTAI

\$3,625,000 Fully Diluted Valuation

\$112,000 Initial Market Cap

Seed: \$0.055 (5% TGE, 2 Month Cliff, 6 months linear)

Private: \$0.07 (10% TGE, 1 month cliff, 4 months linear)

Public on Ape: 0.1% (15% TGE, 3 month cliff, 3 month linear)



DEVELOPED USING
NEUROPLAY

#1

PLAYGPT

THE COSMOS RIFT

Cosmos Rift is the first game created on PlayGPT and utilizing some of the NeuroPlay features to enhance it. It is a mobile game with PVP features and a deep in-game economy balance and story.

AI-GENERATED
LEVELS

AI-ENHANCED
STORYTELLING

PVP AI
BALANCING

AI-GENERATED
NPCS

IN GAME
ECONOMY BALANCE



Cosmos Rift contains many elements created or enhanced by NeuroPlay AI capabilities.



DEVELOPED USING
NEUROPLAY

#1



Many other small features and details have been enhanced by NeuroPlay.

Cosmos Rift will be available on both Android and iOS and will contain in-game items as NFTs, purchasable through \$GPTAI



Cosmos Rift lore and story was enhanced by NeuroPlay, creating a more engaged storyline, as well as a fantastic cinematic implemented by PlayGPT developers



Scene:

Scene:

Scene:

Scene:





DEVELOPED USING
NEUROPLAY

#2



PLAYGPT

REFERRAL MADNESS

You can elevate your PlayGPT experience with our revolutionary Telegram Bot. Designed to boost user engagement and foster a vibrant community, this new feature includes a referral program, an addictive tap game, and a dynamic leaderboard system. Together, they enhance user interaction, grow our player base, and improve our AI systems.



COMING SOON

KEY FEATURES:

Referral Program: Allows to invite friends to join PlayGPT and earn rewards for each referral, promoting community growth. The more people are referred, the higher are the rewards, ranging from in-game currency to rare items and abilities.

Engaging Tap Game: Our tap game provides endless entertainment by testing your reflexes and strategy to earn rewards. With AI-driven challenges, you can enjoy dynamic difficulty levels and personalized tasks, keeping the game fresh and exciting.

Dynamic Leaderboard with Rewards: Compete with others on our leaderboard to earn special rewards and community recognition for top performance. As you climb the leaderboard, you unlock unique story elements, characters, and items, enriching your narrative experience.



BENEFITS:

Enhanced Interaction: Stay connected and engaged with the game and community through the Telegram Bot.

Community Growth: Rapidly expand our player base through referrals and engaging gameplay.

Advanced AI Training: Improve AI systems with increased user interactions and data collection, ensuring cutting-edge gameplay experiences.

Join the PlayGPT revolution today! Engage with our Telegram Bot, refer friends, master the tap game, and climb the leaderboard to unlock incredible rewards. Be part of a growing community where every action you take contributes to the evolution of gaming.

ROADMAP

◆ YEAR 1: 2024

THE GENESIS ERA: AWAKENING AI-POWERED WORLDS

Q2 2024: Epoch of Emergence



ADAPTIVE AI INTEGRATION

Players experience a personalized and immersive world as AI adapts to their unique playstyles.



INTELLIGENT NPC INTERACTION

NPCs respond dynamically to player actions, making the game world feel alive.

Q3 2024: Epoch of Refinement



DYNAMIC DIFFICULTY TUNING

Ensures a balanced and challenging experience for all players, keeping engagement high.



AI-DRIVEN ONBOARDING

New players receive tailored tutorials, easing their entry into the game and enhancing retention.

Q4 2024: Epoch of Optimization



REAL-TIME FEEDBACK ADAPTATION

Continuous game improvements post-launch, ensuring a polished and evolving experience.



DYNAMIC STORYLINES

Narratives adapt to player choices, offering a unique journey for each individual.

◆ YEAR 2: 2025

THE EXPANSION ERA: EVOLVING BEYOND BOUNDARIES

Q1 2025: Epoch of Evolution



AI-POWERED CONTENT UPDATES

Regular updates keep the game fresh, ensuring long-term player satisfaction.



PLAYER-CENTRIC BALANCING

Game mechanics are constantly refined based on player data for a fair and enjoyable experience.

Q2 2025: Epoch of Personalization



ENHANCED CHARACTER CUSTOMIZATION

Players enjoy deeper character creation options, personalized by AI based on their preferences.
Feature: Adaptive In-Game Events



ADAPTIVE IN-GAME EVENTS

Unique, player-driven events keep gameplay unpredictable and exciting.

Q3 2025: Epoch of Innovation



AI-GENERATED QUESTS

A constant flow of new, tailored missions keeps the game engaging and avoids repetition.



COOPERATIVE AI COMPANIONS

AI teammates learn from and adapt to the player's strategies, enhancing teamwork and gameplay.

Q4 2025: Epoch of Mastery



AI-DRIVEN ANALYTICS

Continuous improvement of the game through deep insights, leading to a better player experience.



STRATEGIC EXPANSION PLANNING

Thoughtfully planned expansions that feel innovative and cohesive, ensuring the game's longevity.

◆ YEAR 3: 2026

YEAR 3: 2026 – THE ASCENSION ERA: EXPANDING THE COSMOS

Q1 2026: Epoch of Ascension



SEAMLESS EXPANSION LAUNCH

New content is smoothly integrated, providing fresh and engaging experiences for players.



EVOLVING AI-DRIVEN CONTENT

The game continuously evolves with AI introducing new features, keeping the experience ever-refreshing.



Only the fearless dare to continue.
The universe isn't ready for what's coming next ...

CONCLUSION

AI continues to advance at a pace that no one expected. Only in the past few years have we finally seen the potential that Artificial Intelligence truly can achieve. Currently, anyone can create amazing and detailed images of almost anything with just a prompt, music, sounds, and even videos that are harder and harder to distinguish from reality.

It is absolutely clear that AI is the future, and the future is now. PlayGPT wants to unite two major industries that have a huge synchronization potential, Gaming, and AI. Through the creation and implementation of NeuroPlay, we aim to give developers, creators and players a unique experience in gaming.

In combination with the Blockchain technology, these three technologies seem to be a perfect match.

Thanks for reading.



PLAYGPT

PLAYGPT.GG

